

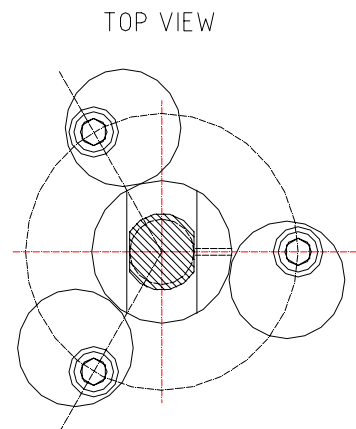
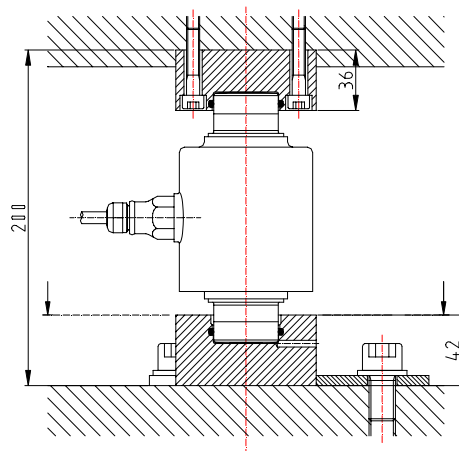
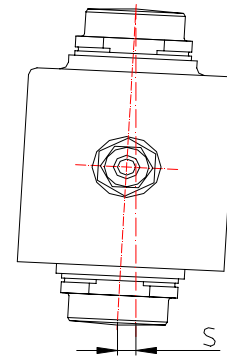
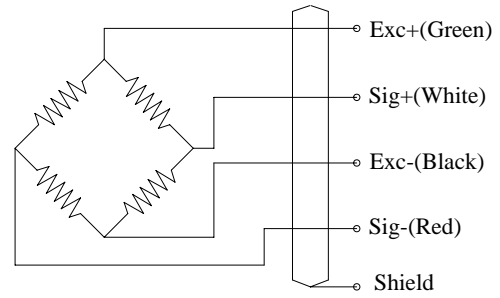
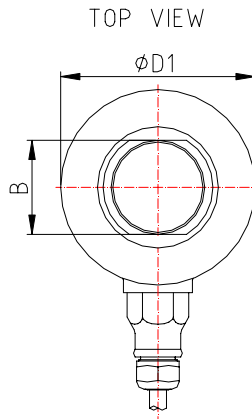
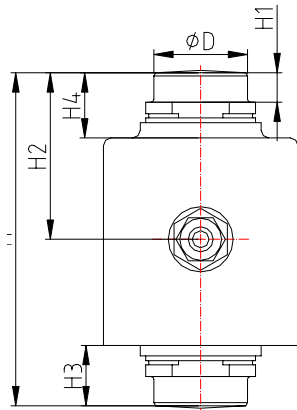
GY-C8A



FEATURE

- Capacities 7.5~50 ton
- Stainless steel housing
- Self restoring design
- High input resistance
- INTERCHANGEABLE Flintec RC3

OUTLINE DIMENSIONS



GY-C8A

capacity	H	H2	H3	H4	H1	B	D	D1	Smax
7.5t	89	44	17	23	11	28	28	65	4.5
15t	89	44	17	23	11	28	28	65	4.5
22.5t	89	44	17	23	11	28	28	65	4.5
30t	140	70	26	28	13	39	39	81	10.5
40t	150	75	31	33	13	39	39	81	10
50t	178	89	32	34	17	44	44	99	9
100t	178	89	38.5	38.5	17	62	62	141.3	11.5
150t	210	105	42.7	42.7	20.6	76.2	76.2	165.1	14.5
300t	280	140	55.9	55.9	25	100	100	165.1	15

SPECIFICATIONS

Capacity	t	7.5,15,22.5,30,40,50,100,150,300
Rated output	mv/v	2.0
Non-linearity	%F.S	0.04
Hysteresis	%F.S	0.04
Creep in 30 minutes	%F.S	0.06
Zero balance	%F.S	±1
Input resistance	Ω	1150±50
Output resistance	Ω	1000±2
Insulation resistance	MΩ	≥5000
Excitation voltage	V	10V (maximum 15V) AC/DC
Environmental protection		IP68
Safe overload	%F.S	150
Ultimate overload	%F.S	300
Operating temperature range	℃	-10~+40
Material		Alloy steel & Stainless steel
Cable Length	m	12m(Φ6) for 7.5 to 22.5t
		18m(Φ6) for 30 to300t