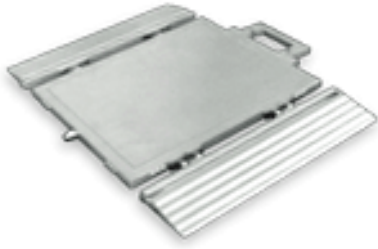


## GY-CZ-1B (2t)



Aluminum-alloy; Ultra thin weighpad design; Easily mounted / unmounted slope; Hermetically sealed, suits different environment; Works both dynamically and statically; Can be used to measure axle weight and whole vehicle weight when two or four weigh-pads are connected together.

### PARAMETER

Rated load: 2(t)	
Dynamic comprehensive error(%F.S): 1.5 (1~5km/h) 3~5 (5~10km/h)	
Static comprehensive error(%F.S): 0.1~0.3	
Static comprehensive error(%F.S): 0.1~0.3	Insulation resistance(MΩ): ≥5000(100VDC)
Dynamic comprehensive error(%F.S): 1.5 (1~5km/h) 3~5 (5~10km/h)	Compensated temp.range(°C): -10~+50
Rated output(mV/V): 1.0±0.1	Use temp.range(°C): -30~+80
Non-linearity(%F.S): 0.2	Temp.effect on zero(F.S/10°C): 0.03
Error on corners(%F.S): 0.2	Temp.effect on span(F.S/10°C): 0.05
Repeatability(%F.S): 0.05	Safe overload(%): 120
Zero balance(%F.S): ±1	Ultimate overload(%): 150
Excitation voltage(VDC): 9~15	Netweight(kg): 8
Recommended voltage(V): 10	Defend grade: IP66

### DIMENSIONS(mm)

