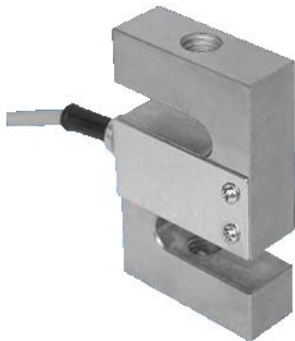


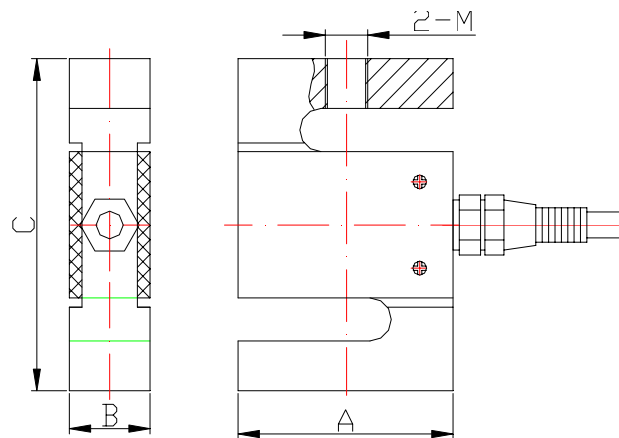
GY-S2B



FEATURE

- Capacities 5~2000kg
- Good output symmetry
- Compact structure
- Simple to install
- Suitable for crane scale, belt scale, blending system
- Interchangeable KELI-DEE

OUTLINE DIMENSIONS



Capacity	Size mm				Weight(kg)
	A	B	C	M	
kg					
5-50	51	12.7	64	M8	0.35
25-75	51	13	64	M8	0.35
50	50.8	15	76.2	M8	0.5
100-300	50.8	19	76.2	M12	0.6
500	50.8	25.4	76.2	M12	0.85
2000	76.2	25.4	108	M16	1.3

GY-S2B

SPECIFICATIONS

Capacity	kg	5~2000
Rated output	mv/v	2.0±0.003 ,3.0±0.003
Non-linearity	%F.S	0.03
Hysteresis	%F.S	0.03
Creep in 30 minutes	%F.S	0.03
Zero balance	%F.S	±1
Input resistance	Ω	400±20
Output resistance	Ω	352±3
Insulation resistance	MΩ	≥5000
Excitation voltage	V	10V (maximum 15V) AC/DC
Environmental protection		IP67
Safe overload	%F.S	120
Ultimate overload	%F.S	150
Operating temperature range	℃	-10~+40
Material		Alloy steel & Stainless steel
Cable Length	m	5

Wiring Schematic Diagram

