

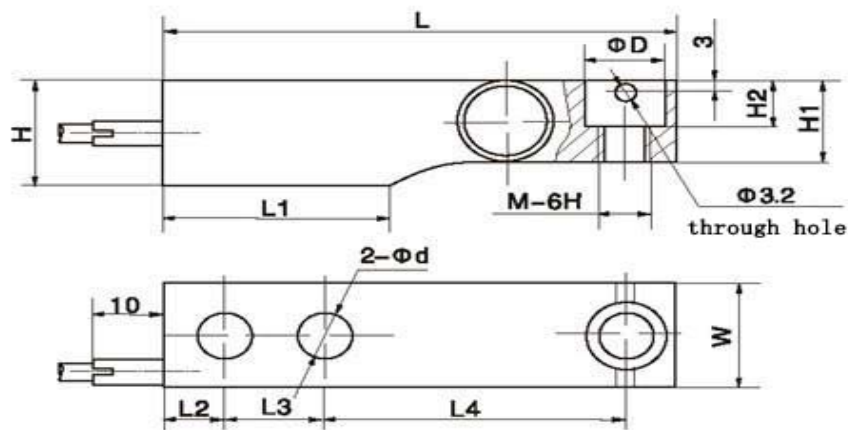
GY-SBF



FEATURE

- Capacities 500lb~10klb, 0.25~ 5t
- Single shear beam, easy for installation
- Safe and anti-explosive product
- Suitable electronic truck scales, track scales and other weighing devices
- Interchangeable ZEMIC-BM8H

OUTLINE DIMENSIONS



Capacity	L	L1	L2	L3	L4	H	H1	H2
50kg 500lb	130.0(5.12)	57 (2.24)	15.5 (0.62)	25.4 (1.0)	76.2 (3.0)	31.8 (1.24)	25.5 (1.01)	14.2 (0.55)
500kg 1klb	130.0(5.12)	57.1 (2.25)	15.5 (0.62)	25.4 (1.0)	76.2 (3.0)	31.8 (1.24)	26 (1.02)	14.2 (0.55)
1.0t 2klb,2.5klb	130.0(5.12)	57.1 (2.25)	15.5 (0.62)	25.4 (1.0)	76.2 (3.0)	31.8 (1.24)	27.95 (1.1)	14.2 (0.55)
1.5t,2.0t 4klb,5klb	130.0(5.12)	57.1 (2.25)	15.5 (0.62)	25.4 (1.0)	76.2 (3.0)	35.9 (1.41)	31.95 (1.26)	14.2 (0.55)
5.0t 10klb	172 (6.71)	76.2 (3.0)	19.1 (0.75)	38.1 (1.50)	95.3 (3.75)	44 (1.72)	40 (1.57)	20 (0.78)
Capacity	W	D	d	M				
50kg 500lb	31.8 (1.23)	20.5 (0.81)	13 (0.51)	M12 1/2-20UNF				
500kg 1klb	31.8 (1.23)	20.5 (0.81)	13 (0.51)	M12 1/2-20UNF				
1.0t 2klb,2.5klb	31.8 (1.23)	20.5 (0.81)	13 (0.51)	M12 1/2-20UNF				
1.5t,2.0t 4klb,5klb	31.8 (1.23)	20.5 (0.81)	13 (0.51)	M12 1/2-20UNF				
5.0t 10klb	38 (1.48)	30.2 (1.19)	20.5 (0.8)	M20 3/4-20UNF				

GY-SBF

SPECIFICATIONS

Capacity	t	0.25 ,0.5 ,1 , 2, 5
	klb	0.5 ,1 ,2.5 ,4 ,5 ,10
Rated output	mv/v	2.0±0.1%
Non-linearity	%F.S	0.03
Hysteresis	%F.S	0.03
Creep in 30 minutes	%F.S	0.03
Zero balance	%F.S	±1
Input resistance	Ω	350±3.5 1000±10
Output resistance	Ω	351±2 1004±5
Insulation resistance	MΩ	≥5000
Excitation voltage	V	10V (maximum 15V) AC/DC
Environmental protection		IP67
Safe overload	%F.S	150
Ultimate overload	%F.S	300
Operating temperature range	°C	-10~+40
Material		Alloy steel & Stainless steel

Wiring Schematic Diagram

